

Local Plan Review Resident Forum Meetings

May 2024

Oadby & Wigston | Our borough -
the place to be

Where we are at...



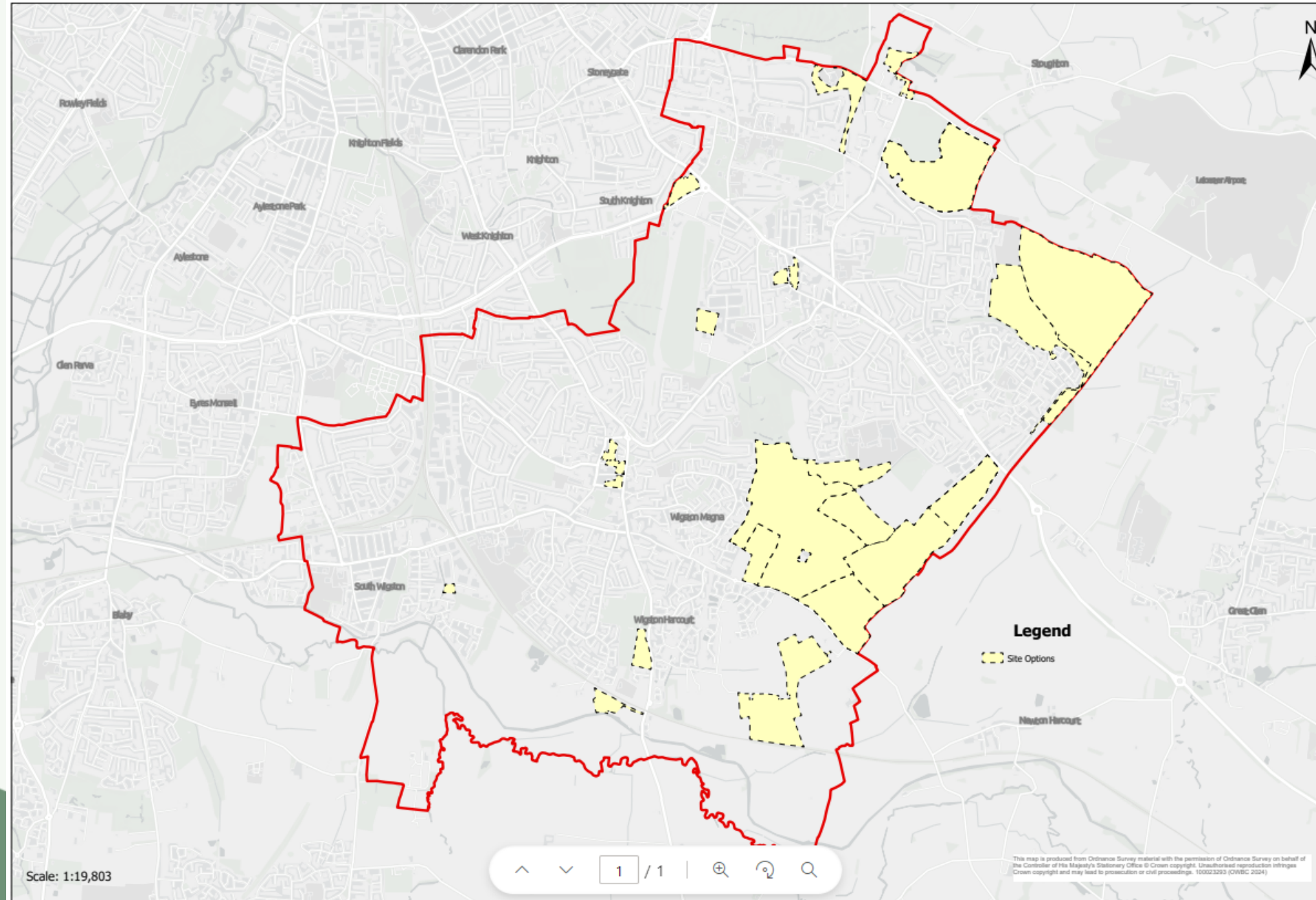
Spatial Strategy: Emerging New Local Plan (2020 – 2041)

- Number of new homes government say are needed (188 per year).
- Leicester City's unmet need that we need to take account of (52 per year).
- Unless emerging evidence suggests otherwise, we will have to meet the 240 dpa figure.
- Over a 21 year period, $240 \times 21 \text{ years} = 5,040$ homes.
- Sequential approach to housing delivery.
- Current Site Options – theoretical (not yet tested) capacity for circa 6,000 new homes.
- Green Wedges, valuable countryside and important landscape areas need to be incorporated wherever possible.

Infrastructure and Developer Contributions

- Small scale ad-hoc sites don't provide infrastructure and cumulatively have significant impacts on local services and facilities.
- Build big to bring forward infrastructure. The general rule of thumb, is the bigger the development, the more of the below is invested in by the developer.
 - New Schools or improved capacity at existing schools
 - Improved capacity at GP Surgery's
 - Off-site highways improvements
 - Off-site walking, cycling, wheeling and public transport improvements
 - Parks, children's play areas and Biodiversity Net Gain
 - Affordable homes
- Larger scale developments can bring with them millions of pounds worth of investment, whereas small scale sometimes wouldn't provide anything.

Current Site Options



Key evidence emerging this year

- Transport Assessment
- Infrastructure Delivery Plan
- Viability Study
- Health Impact Assessment
- Design Guide and Landscape Character Assessment
- Green Wedge Review
- Strategic Flood Risk Assessment
- Biodiversity Study

Next Steps

- Preferred Options Public Consultation – April/May*
- Pre-Submission Public Consultation – early 2025
- Submission – April 2025
- Examination – Summer 2026 (tbc)